

Bird

Sewing Pattern and Instructions



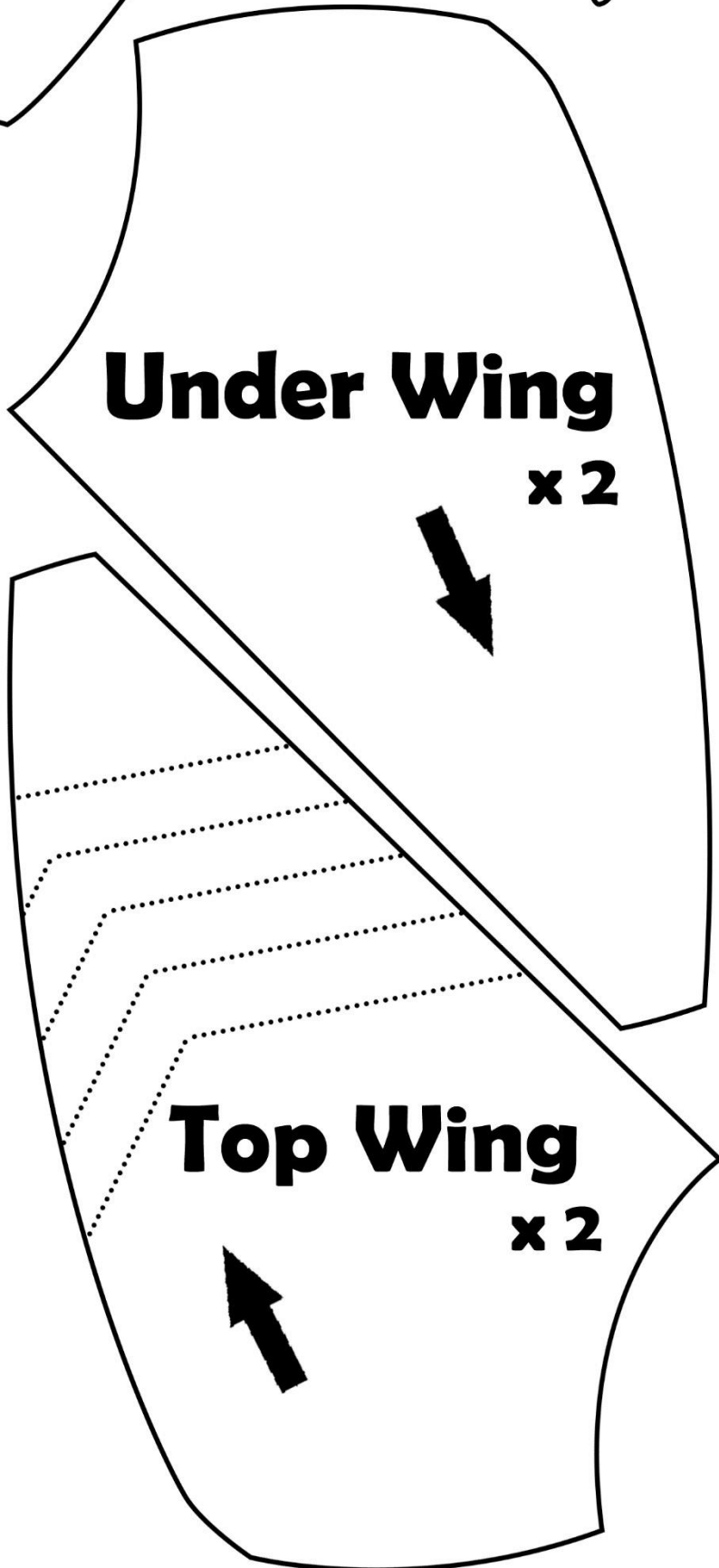
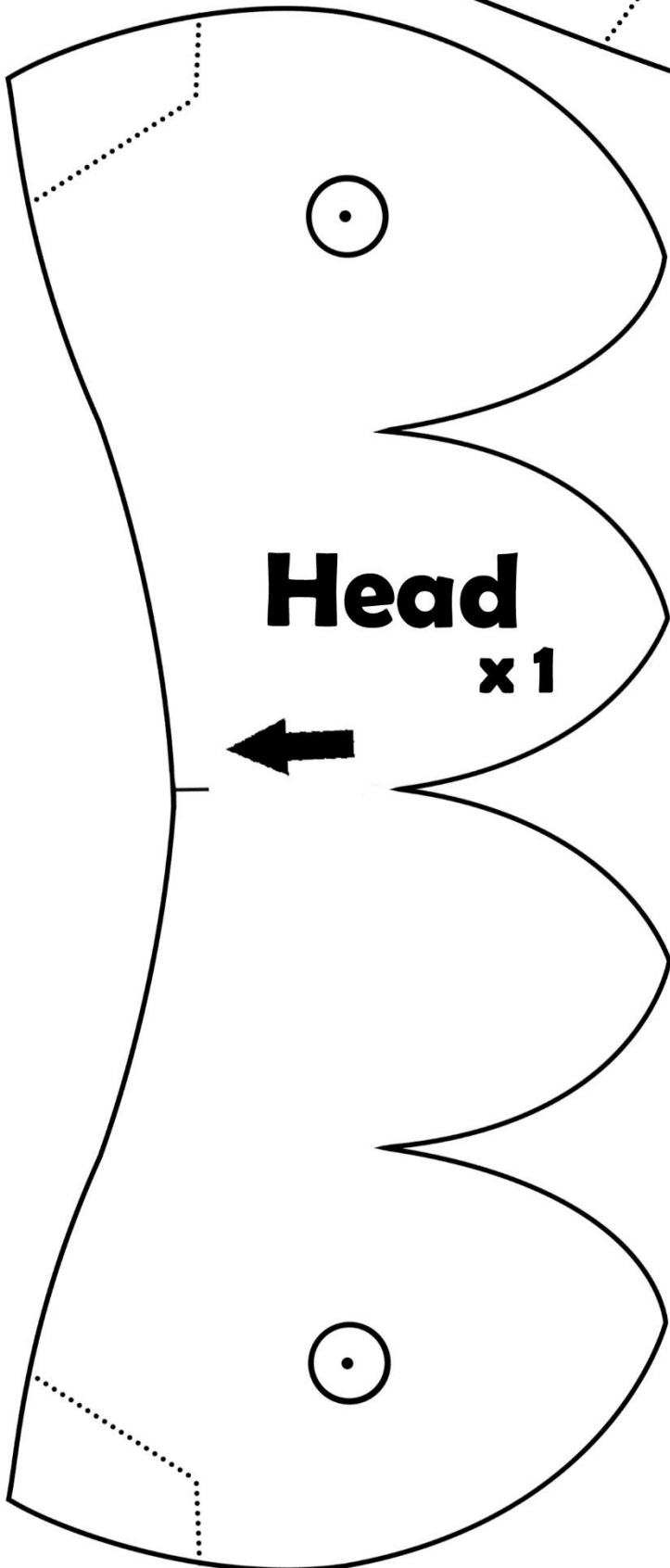
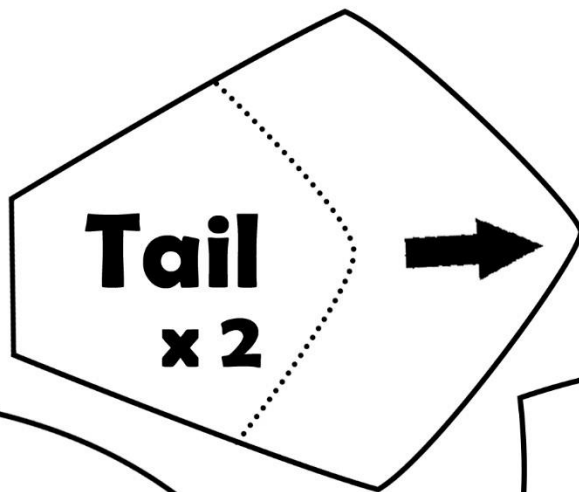
Difficulty: ●●○○○

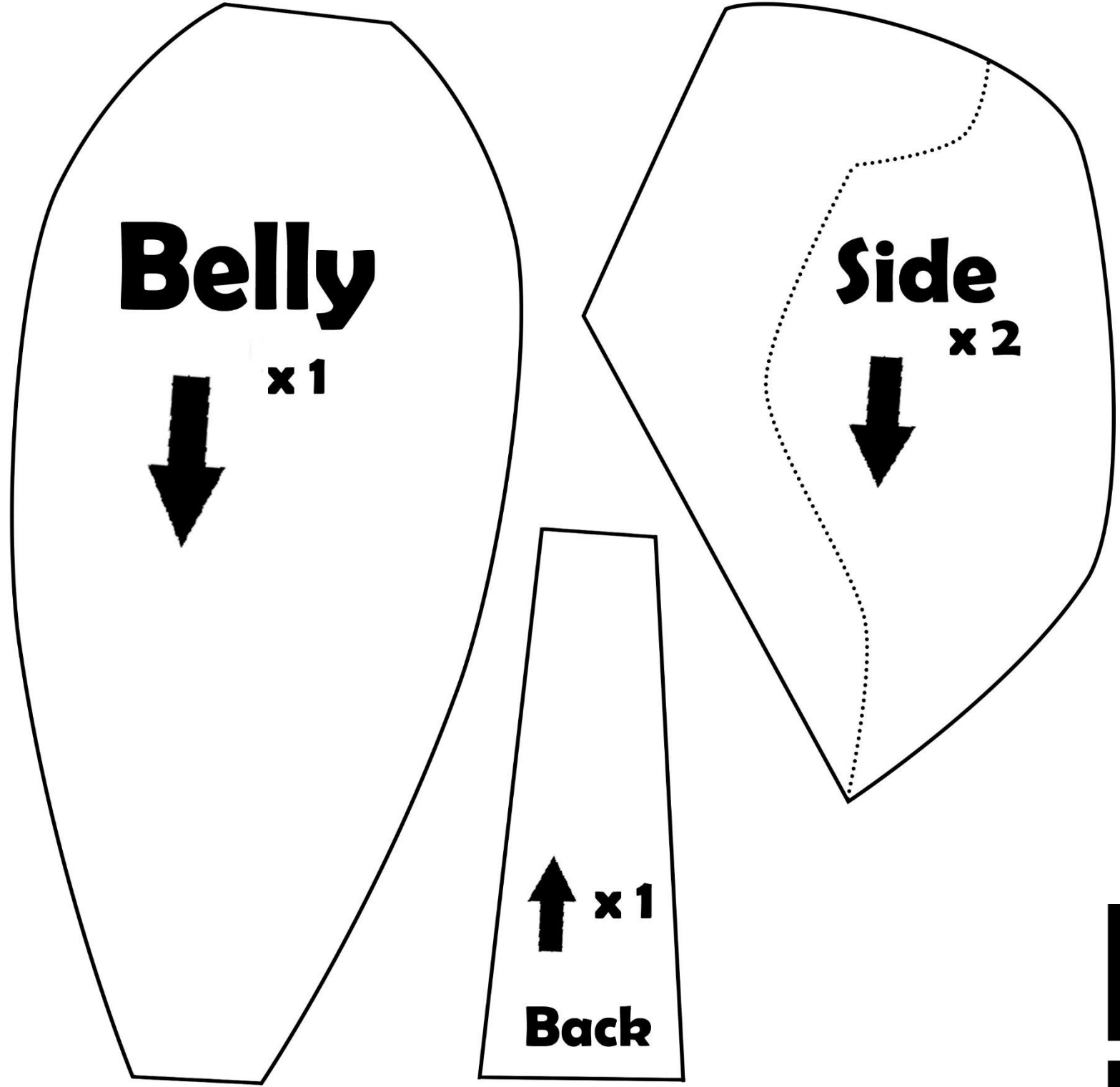
What You'll need:

- Fabric
- Plastic eyes and nose
- Stuffing
- Scissors, Needle, and Thread

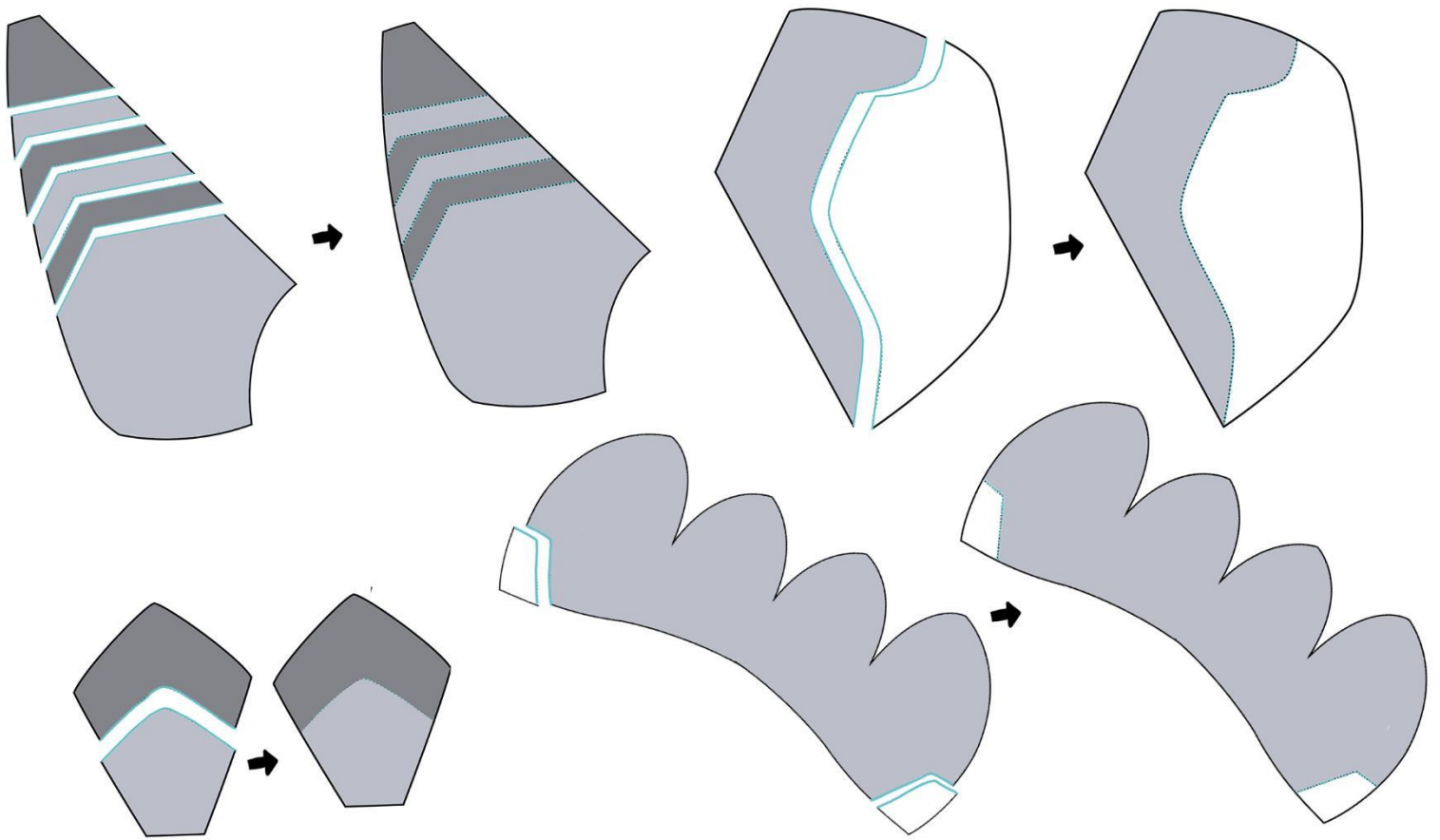


Please note that you are not allowed to sell this pattern or any plush made with it.

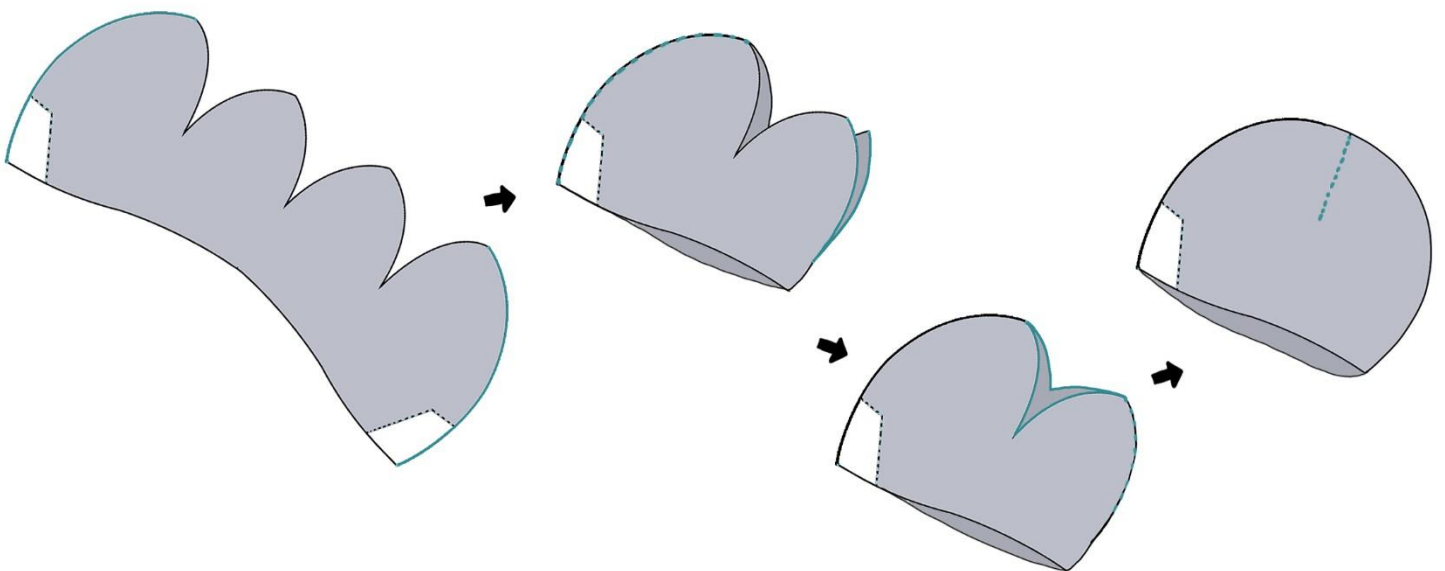




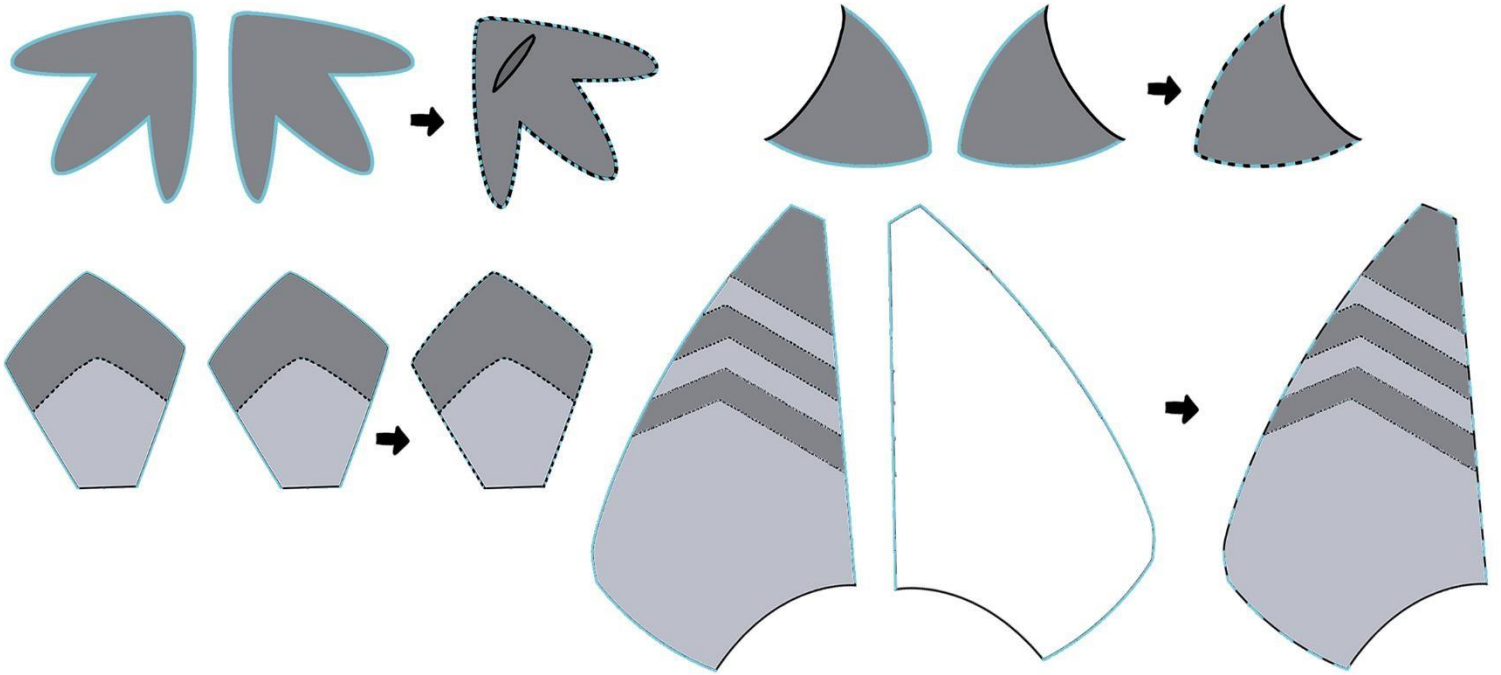
Print out the pattern and make sure the 1 inch and 1 cm lines are the correct size. Cut along solid black lines (and the dotted lines if using the suggested fur pattern). Trace on the fabric of your choice and use the arrows to line up with the direction of the fur. x1 and x2 tells you how many times to use that piece. When cutting out the fabric, leave 1/4 inch of seam allowance.



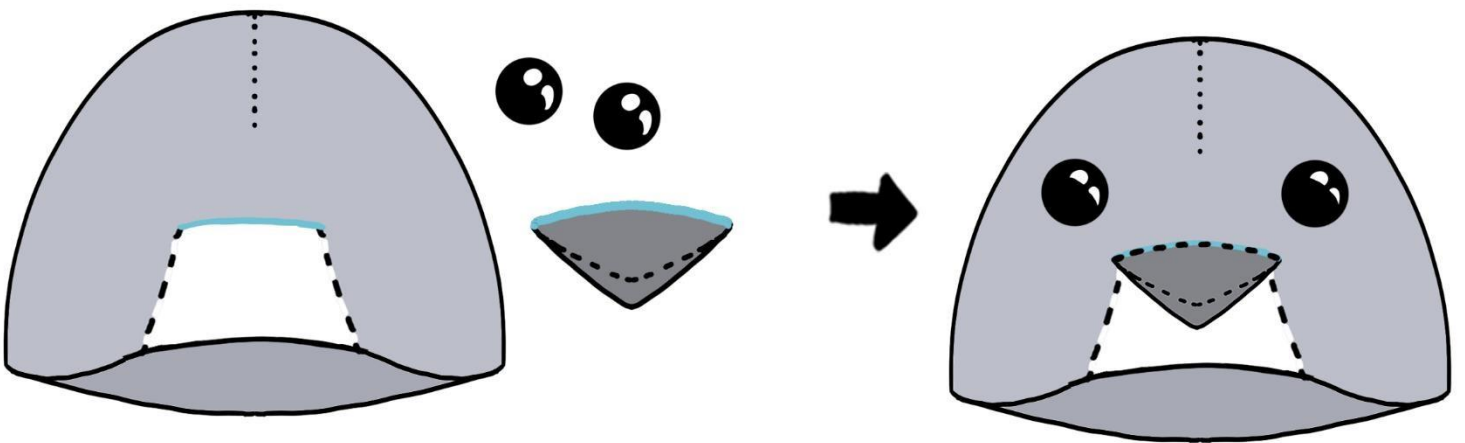
Sew together the Top Wings, Sides, Tail, and Head.



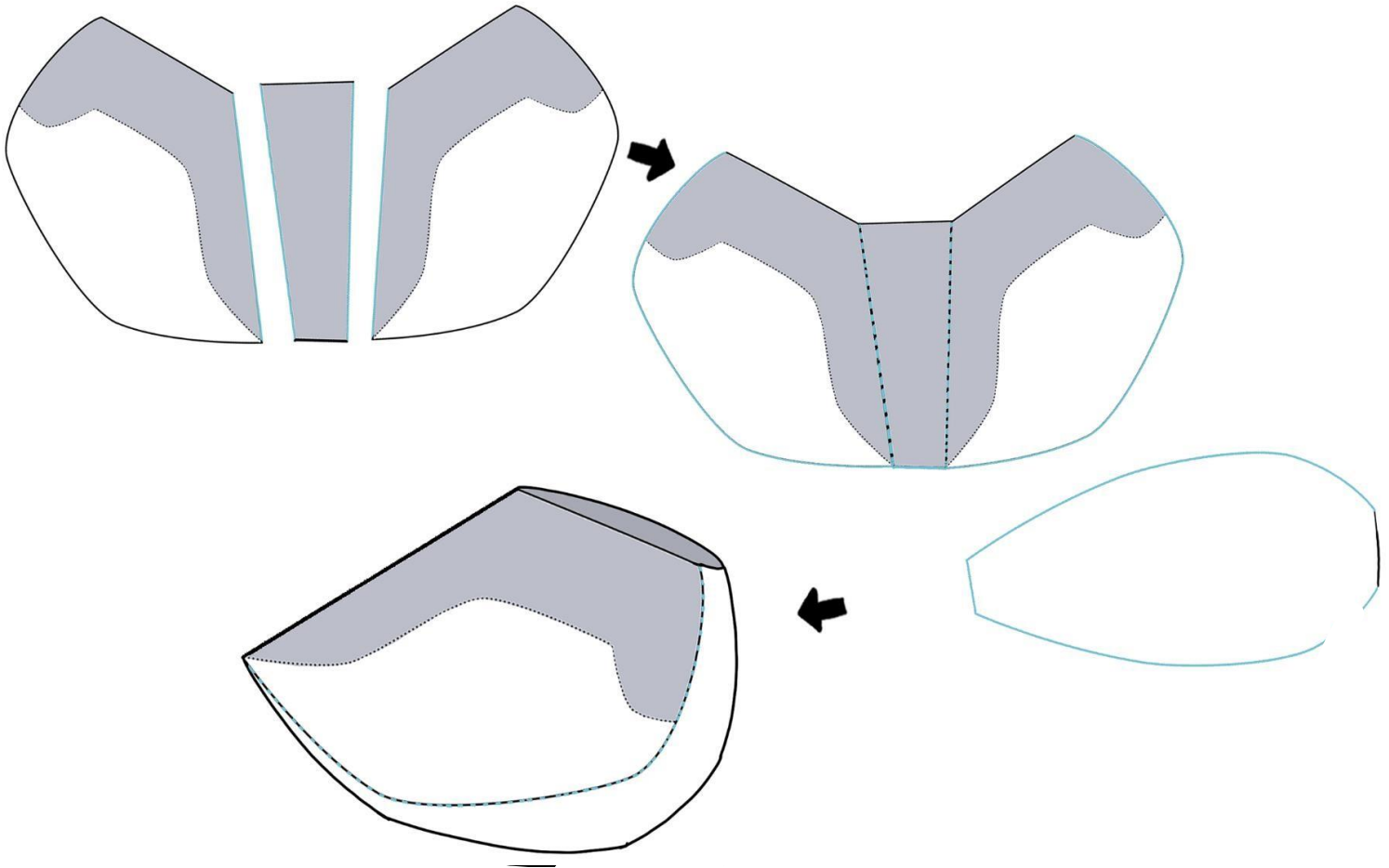
Start by folding the head in half (right sides together) and sewing up the sides. Continue sewing up the flaps so they all meet at the top of the head. It should form a round shape.



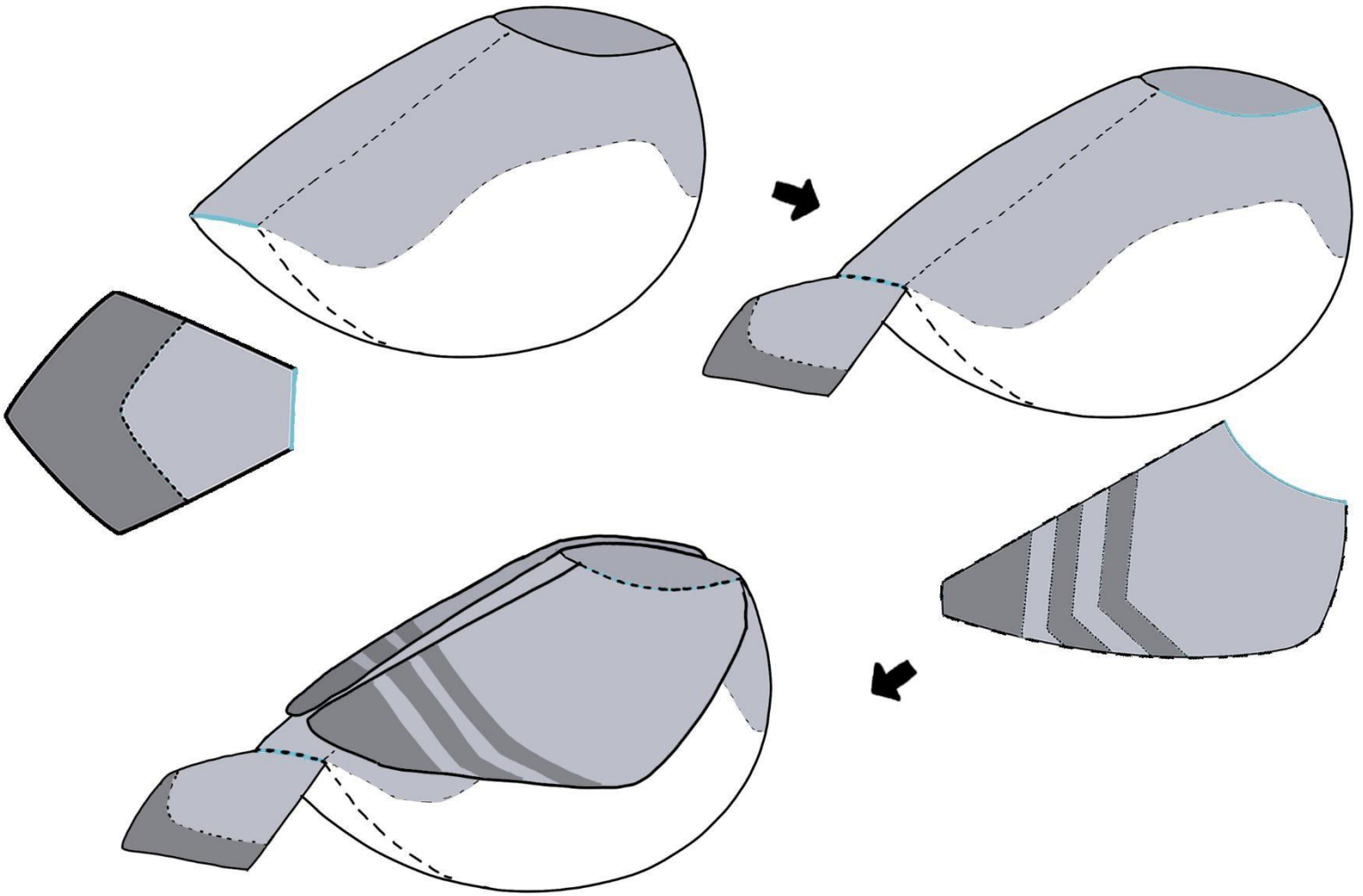
Sew together the two sides of the Feet, Beak, Tail, and Wings. The right sides should be facing together. Once done sewing flip inside out. Cut a slit of the top of the Feet to flip, this will be hidden later.



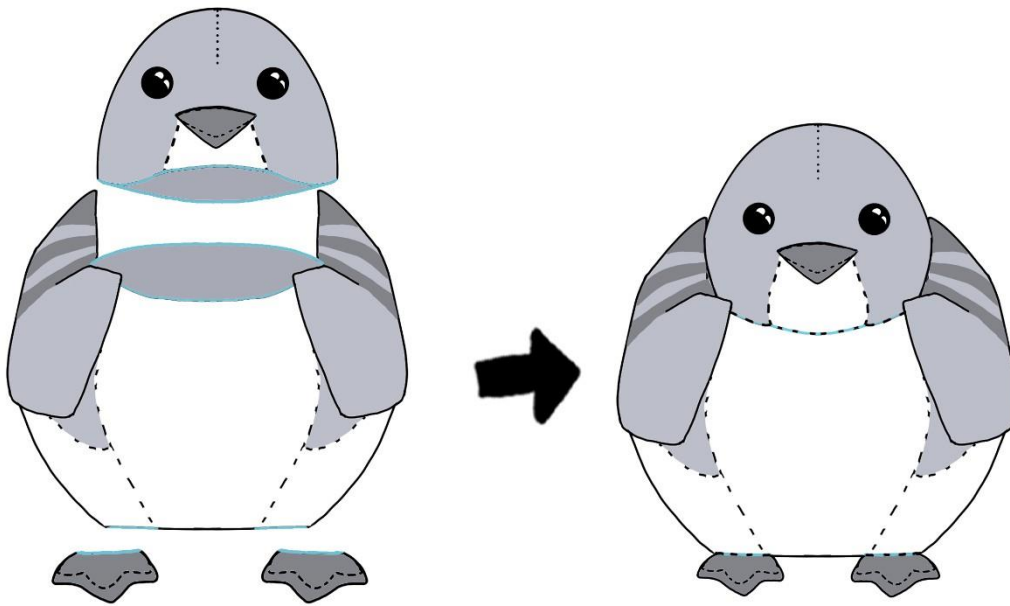
Attach the Beak to the Head. Sew along the top of the white patch. Next, cut small holes in the Head piece. The small black holes on the pattern will serve as a guide. The holes cut should be no larger than a couple of millimeters, don't make them too big. Secure the eye pieces.



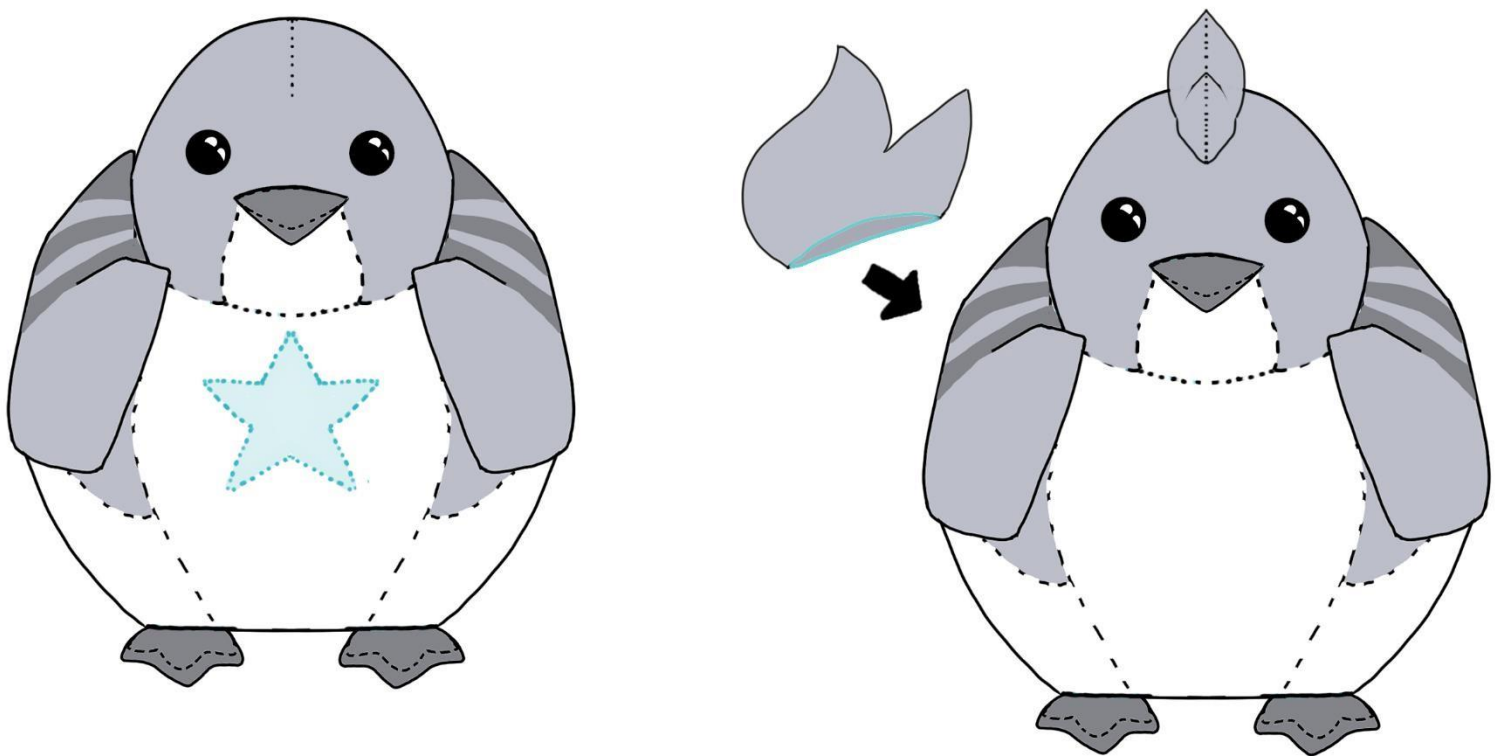
Sew the Back piece to the Side pieces. The wide end of the back piece should face towards the neck opening. Next, sew the Belly to the Side/Back pieces. The short flat sections of the Belly and the Back should be sewn to each other.



Attach the Tail to the flat section on the back of the Body. Next Sew the two wings to the neck hole. The two Wings can be placed wherever you prefer along the neck.



Finally, stuff the Head and Body and sew them together. Attach the feet to the bottom of the Body with the side with the slit facing the Body.



Optional: You can include a design of the Belly or add a Crest to the top of the Head. These can add personality to your Bird!

Finished!