

# Wolf

Sewing Pattern  
& Instructions



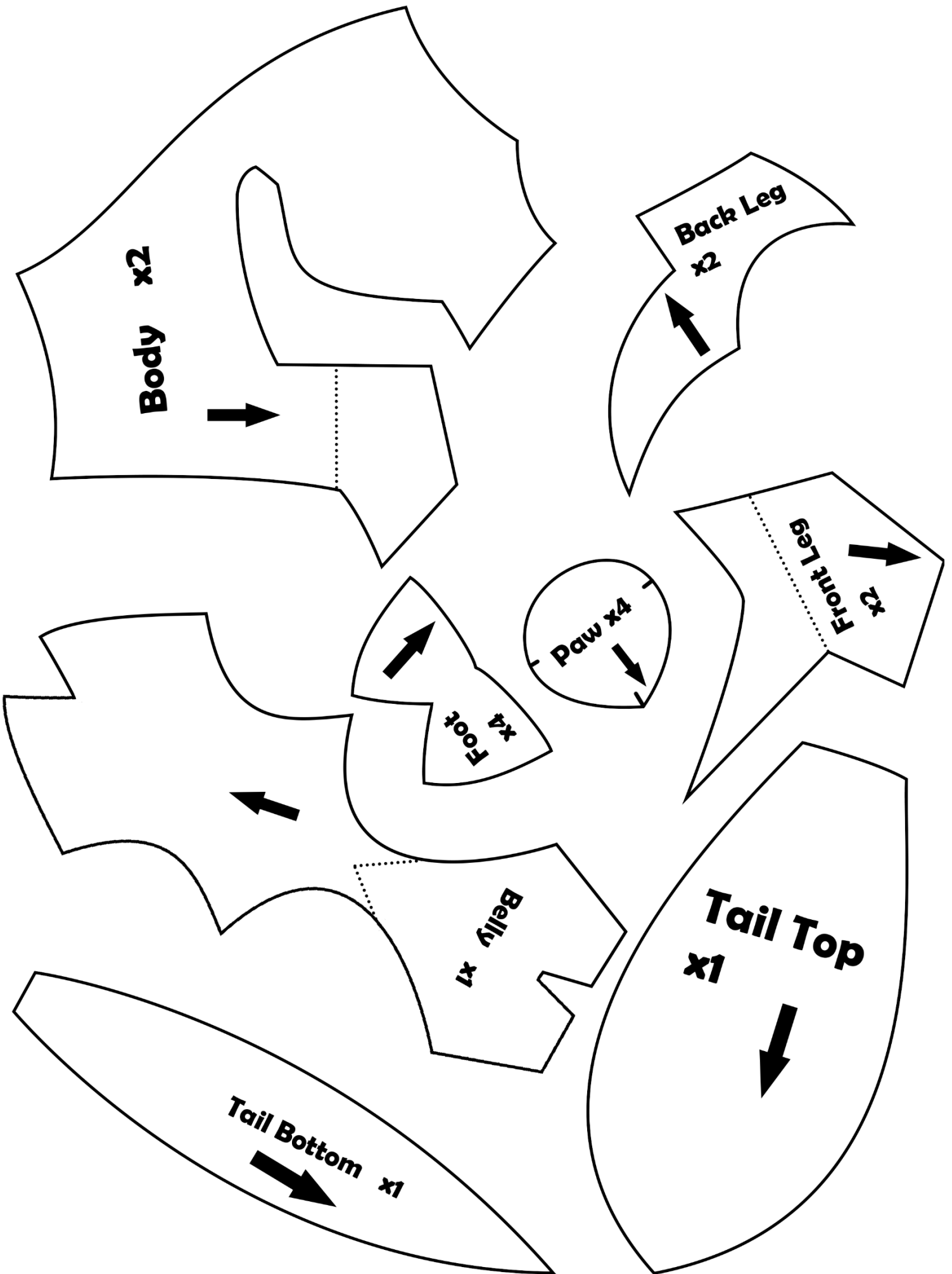
Difficulty: ●●●○○

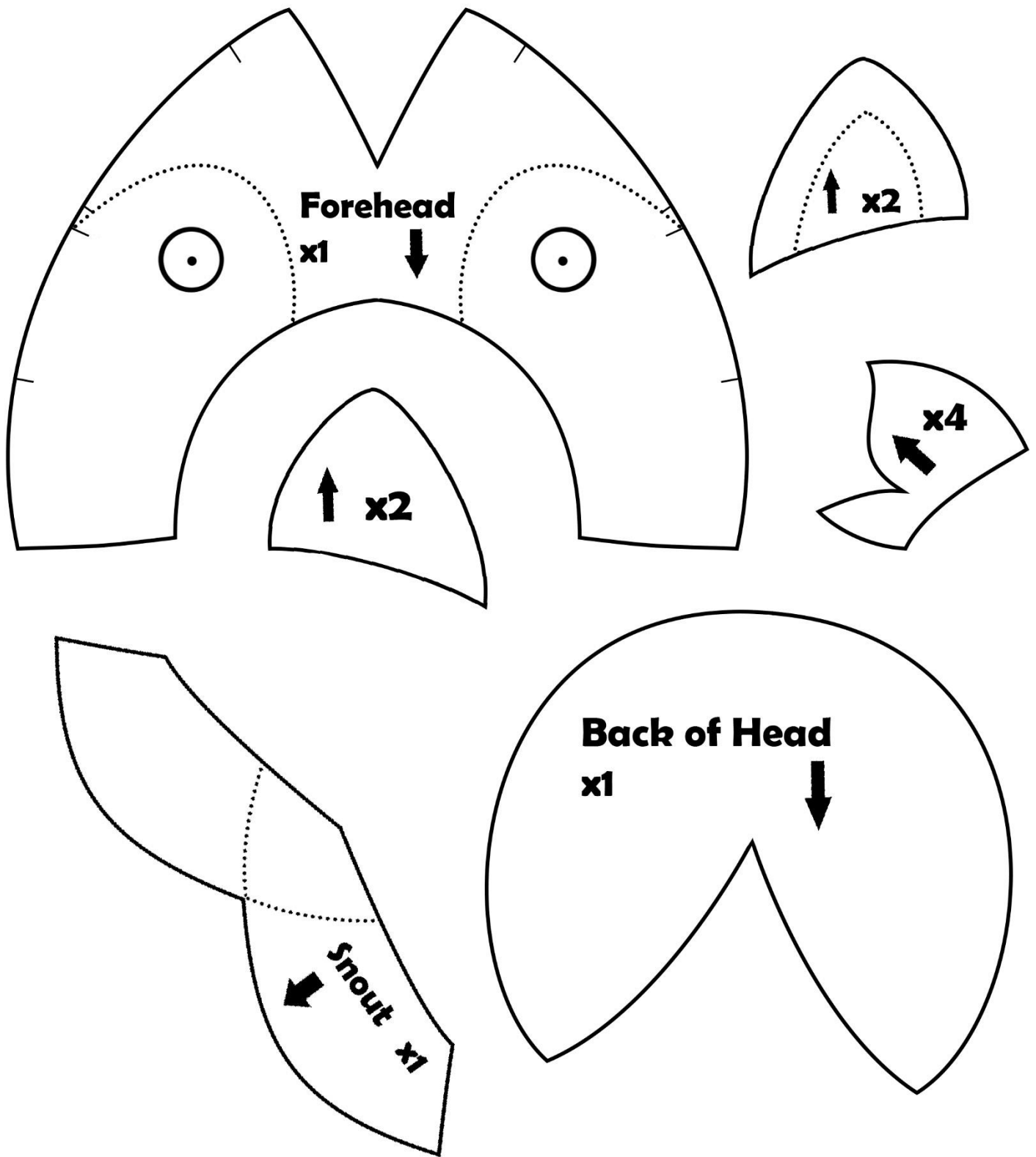
What You'll need:

- Fabric
- Plastic eyes and nose
- Stuffing
- Scissors, Needle, and Thread

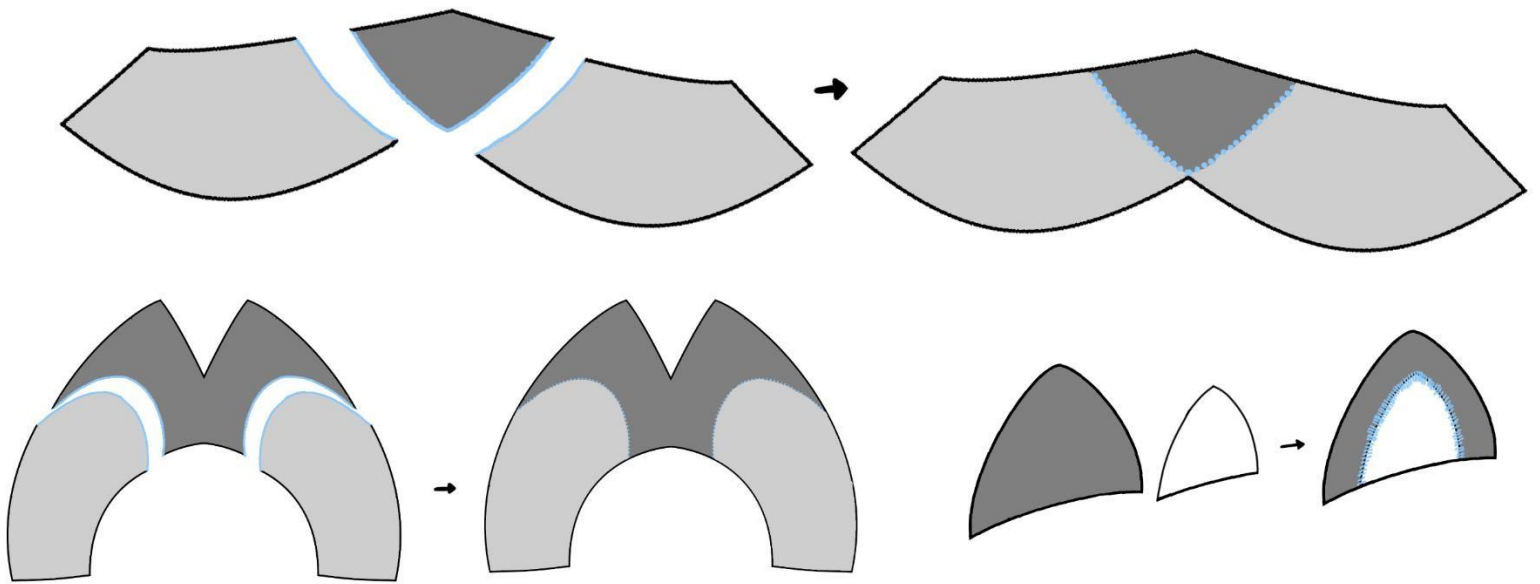


Please note that you are not allowed to sell this pattern or any plush made with it.

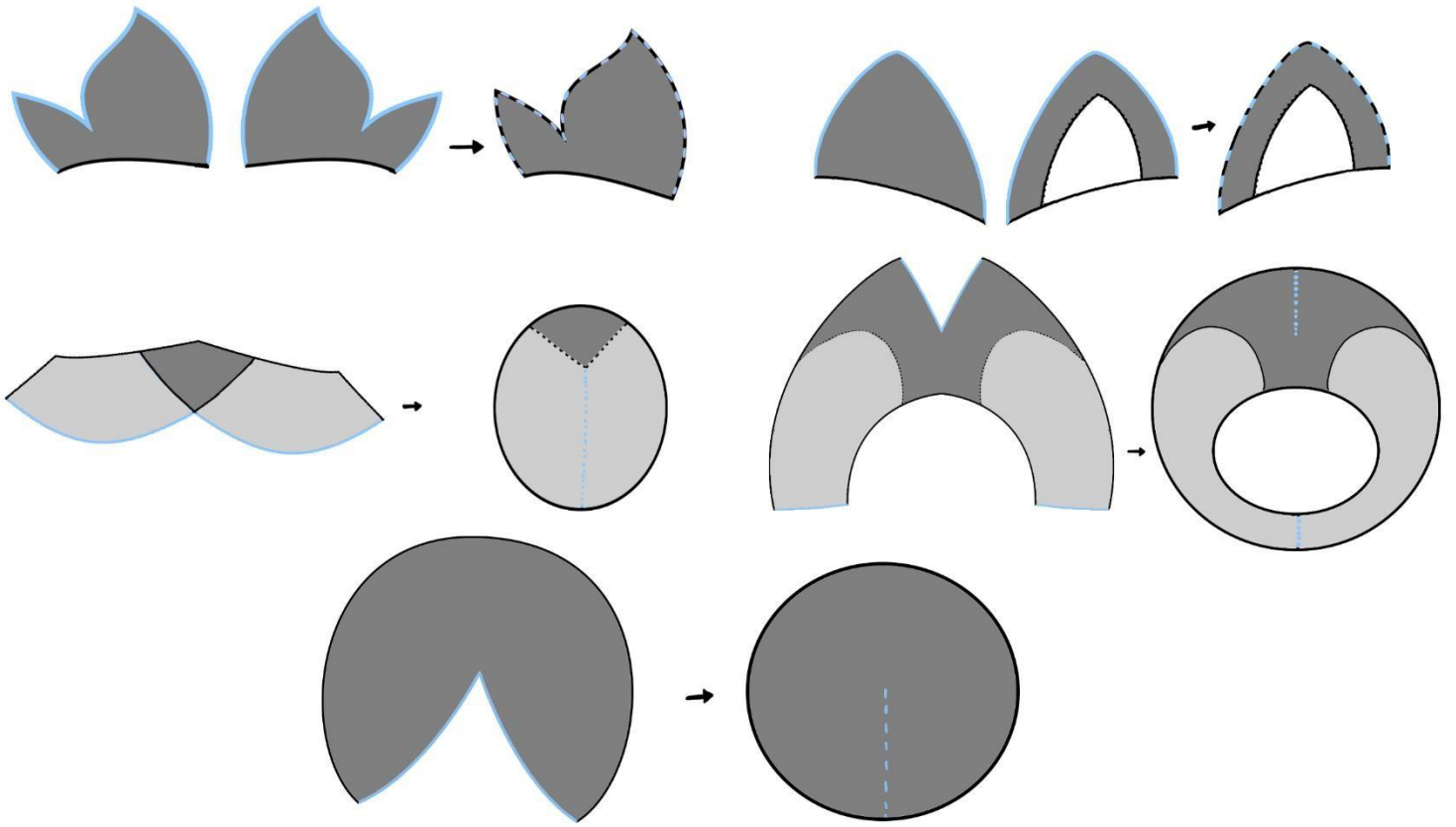




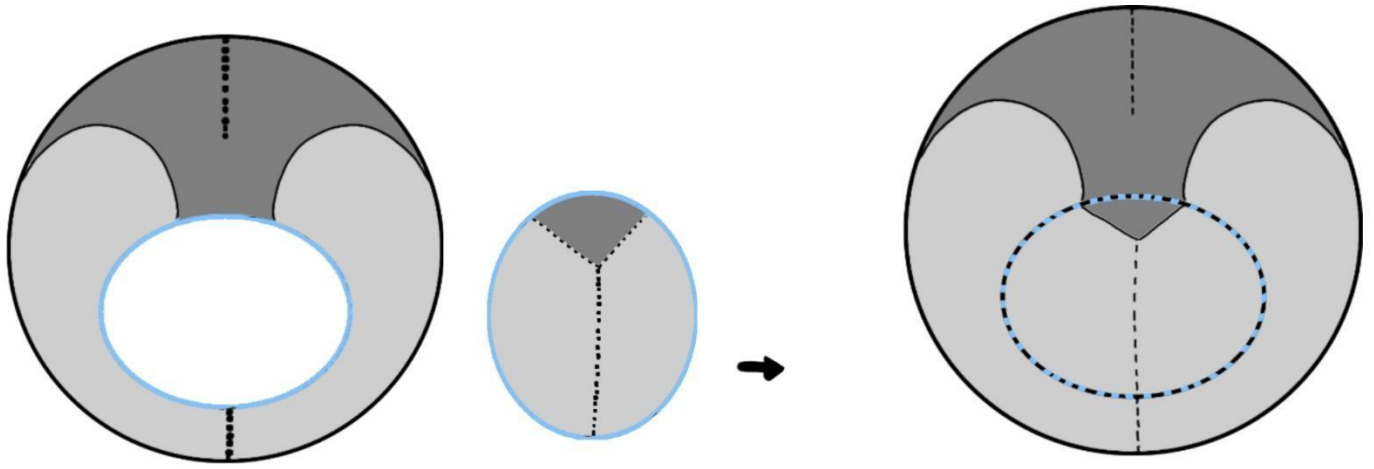
Print out the pattern and make sure the 1 inch and 1 cm lines are the correct size. Cut along solid black lines (and the dotted lines if using the suggested fur pattern). Trace on the fabric of your choice and use the arrows to line up with the direction of the fur. x1 and x2 tells you how many times to use that piece. For example; when tracing out the fur tufts, trace the pattern 4 times on the fabric, flipping the pattern each time. When cutting out the fabric, leave 1/4 inch of seam allowance.



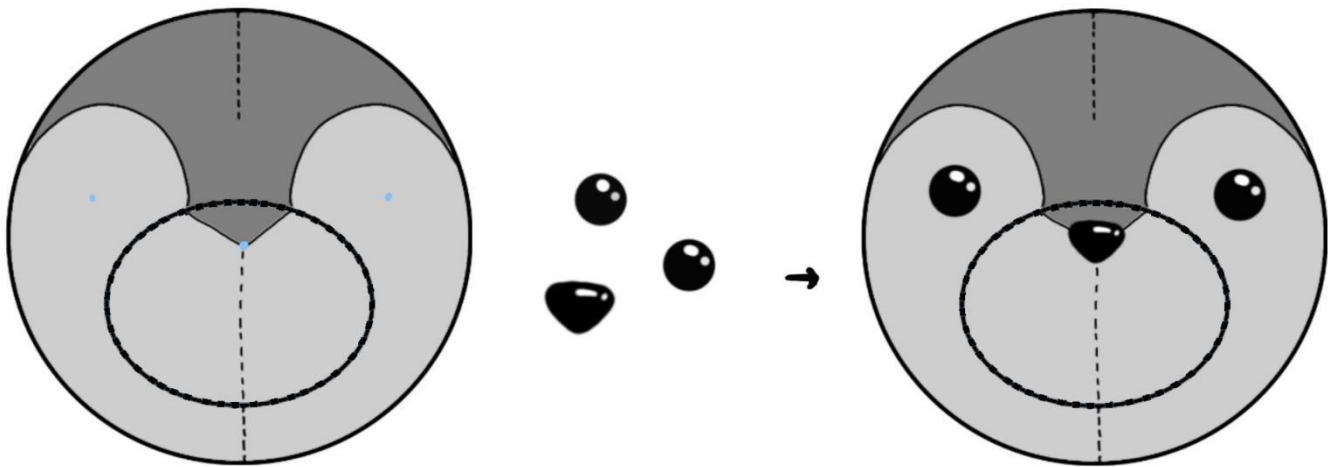
Sew together the Snout and Forehead pieces. Emboss the inner ear to the outer ear pieces



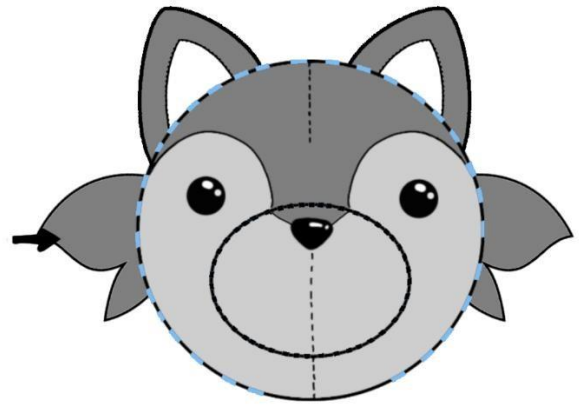
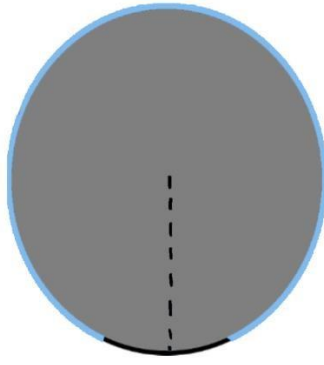
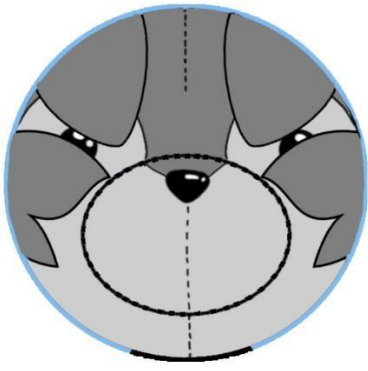
Sew together the Fur tufts and the front ear and back ear pieces (right sides facing together). Stitch the Snout, Forehead, and Back of the Head pieces along the blue lines.



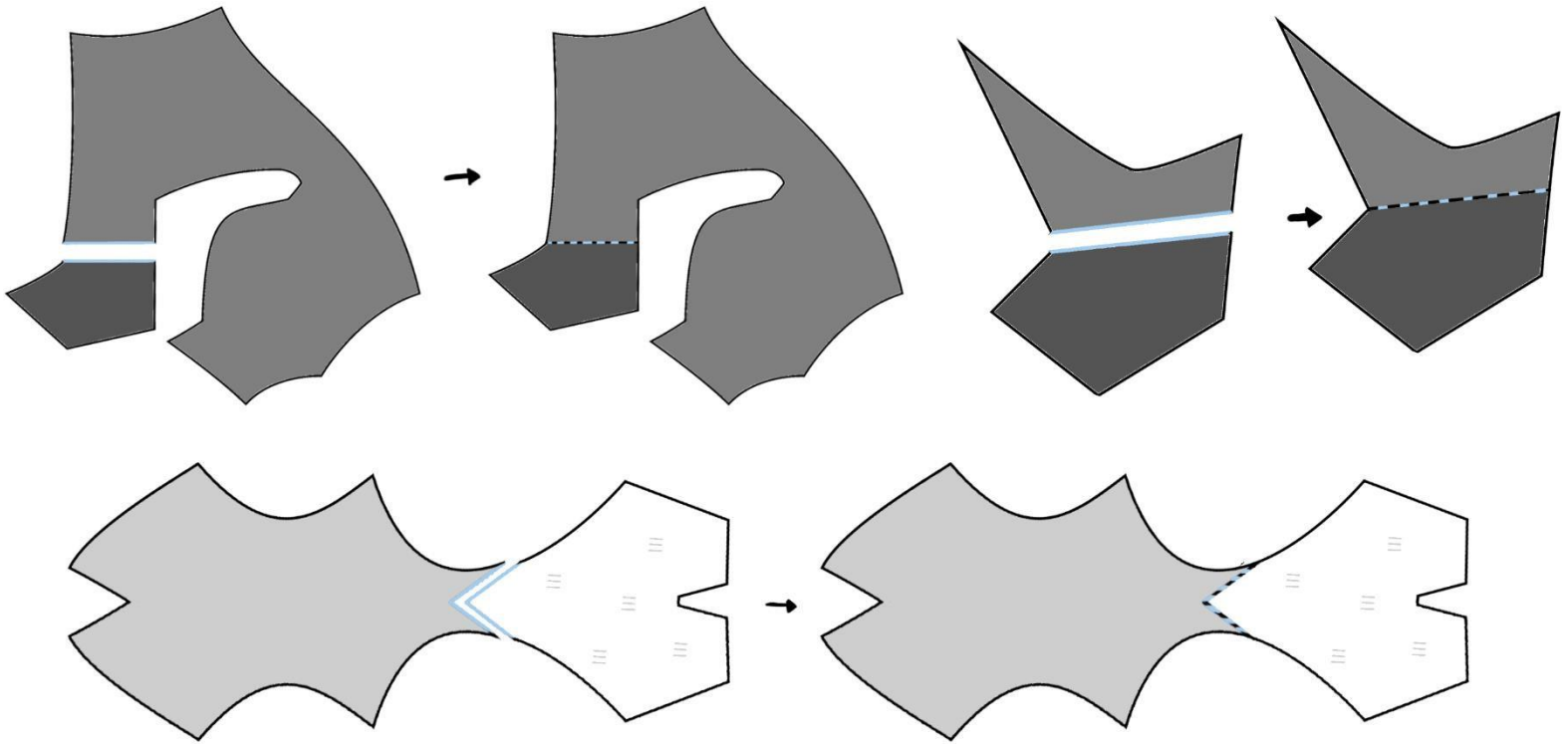
Sew the Snout and the Forehead together.



Cut Small holes In the Forehead piece. The small black holes on the pattern will serve as a guide. The Seam on the Snout should be large enough for the plastic nose to fit through, but if it's not cut a small slit. The holes cut should be no larger than a couple of millimeters, don't make them too big. Secure the nose piece and the eye pieces.

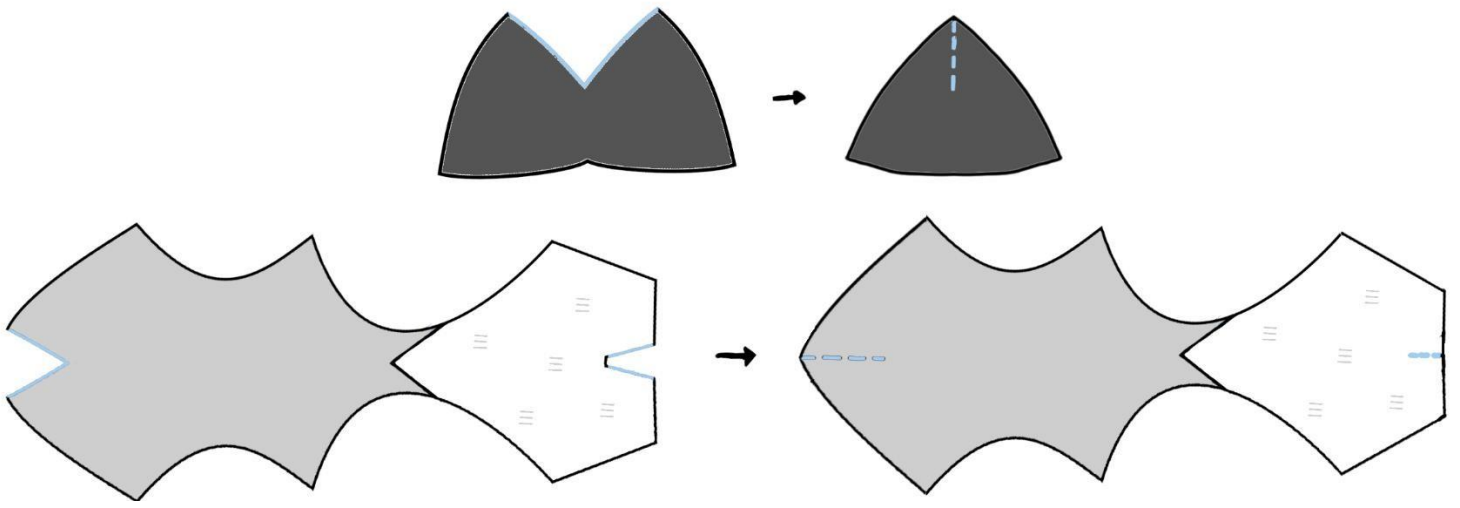


Take the Front Head piece and the Back Head piece and sew them right sides together with the ears and face tufts in-between. They should be lined up according to the markings on the pattern. Having them stay in place may be tricky so don't be afraid to pin the smaller pieces in place while sewing. Leave a small gap at the base of the head. Turn the head and stuff. Once stuffed you can use a ladder stitch to close the hole. The head is done.

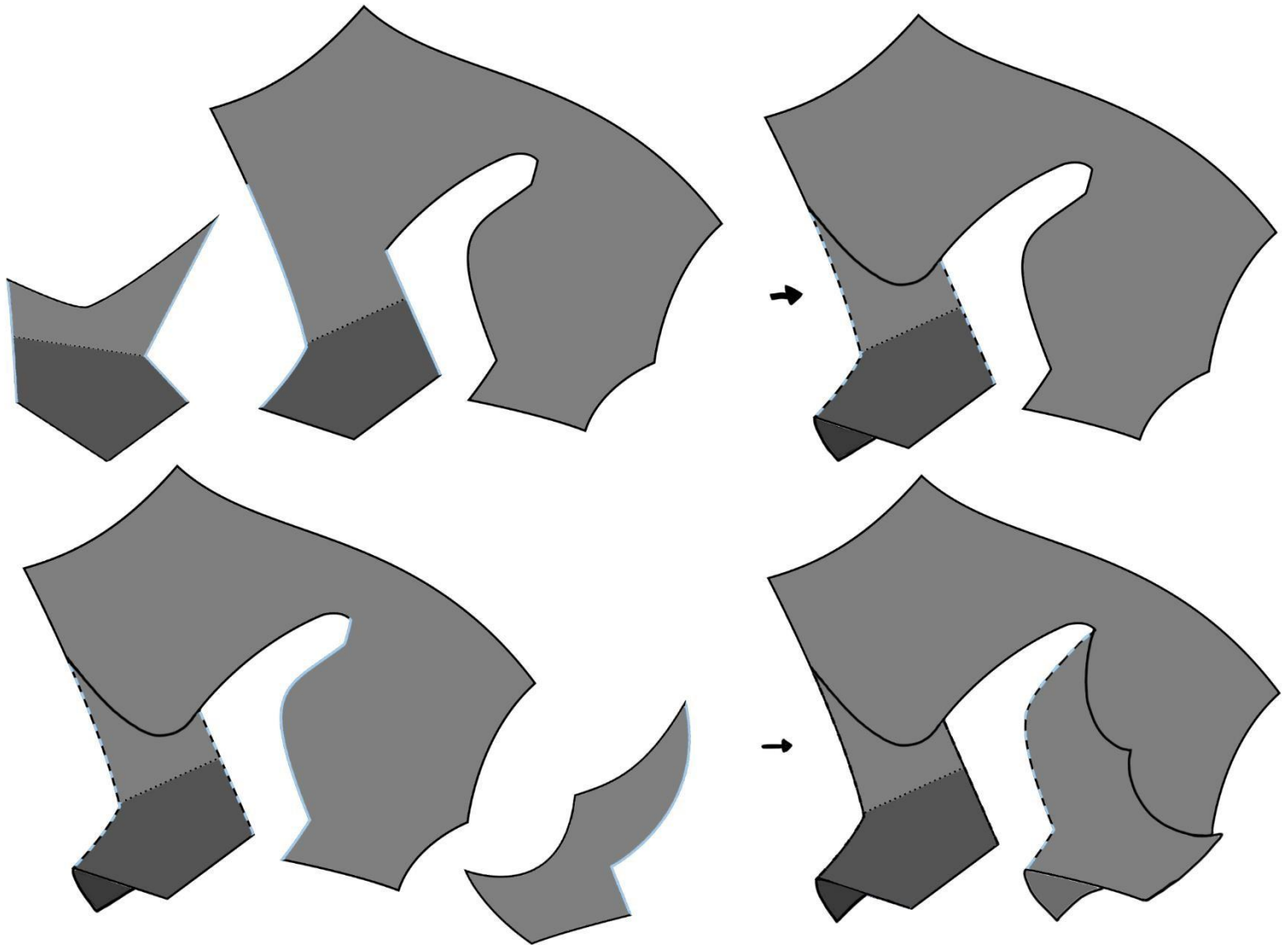


Stitch together the different parts of the Body, Front Leg, and Belly pieces.

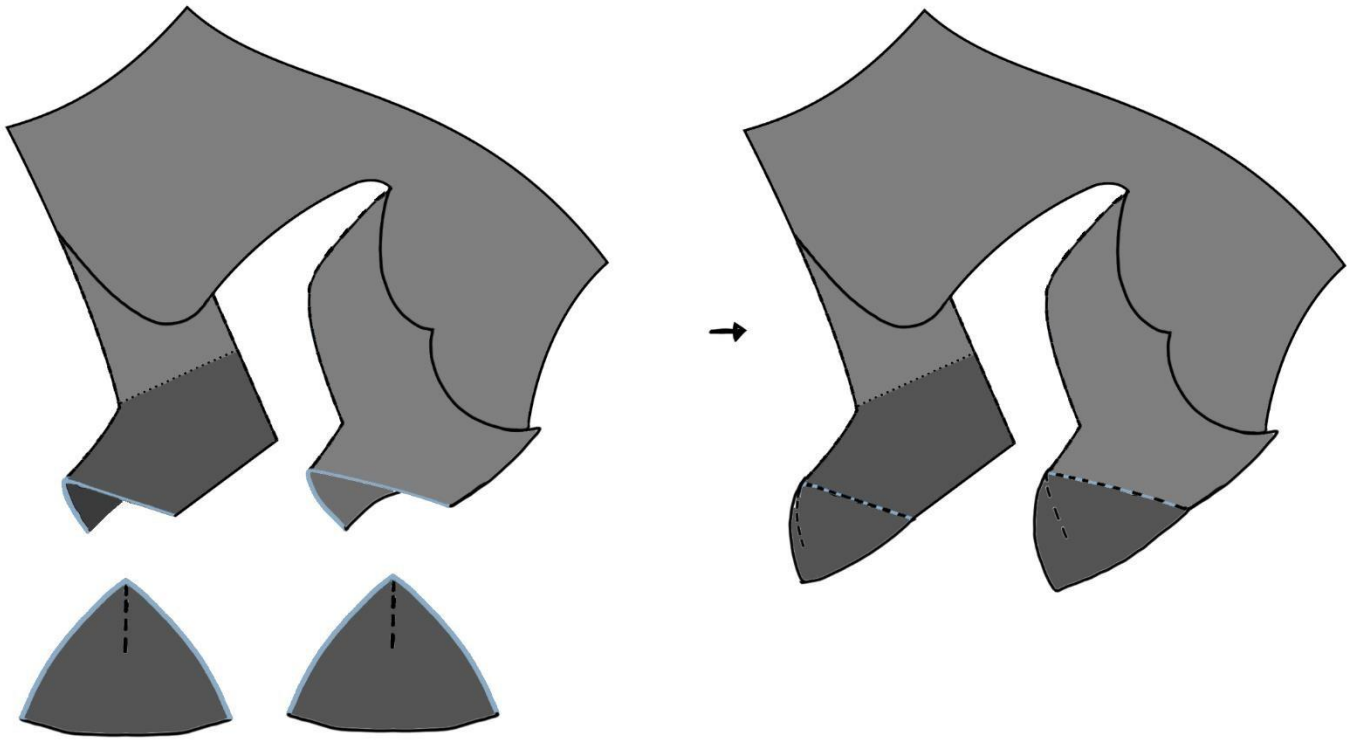




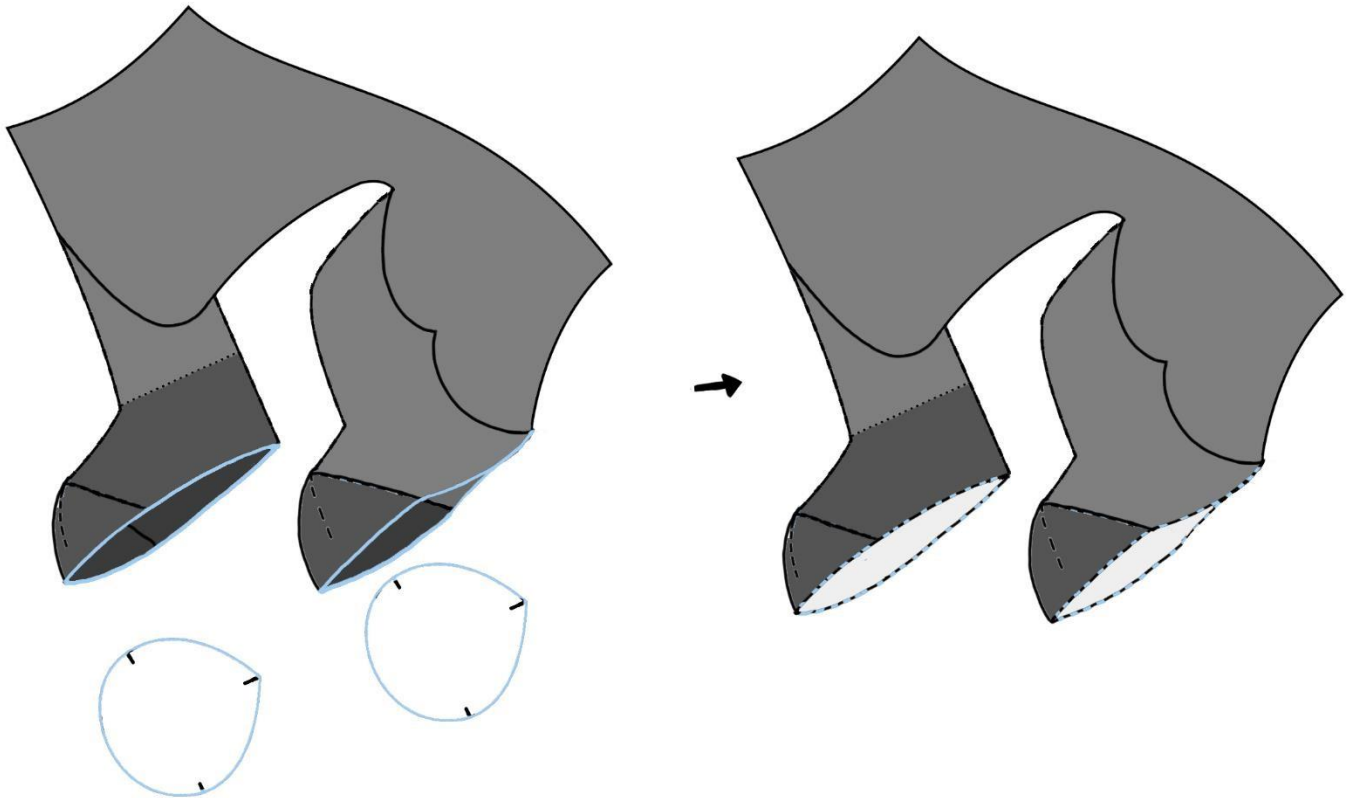
Sew the Foot and Belly pieces close.



Next, sew the Front Leg piece to the Body right sides facing together. Make sure that the markings match up. After that sew the Back Leg piece to the Body right sides facing together.



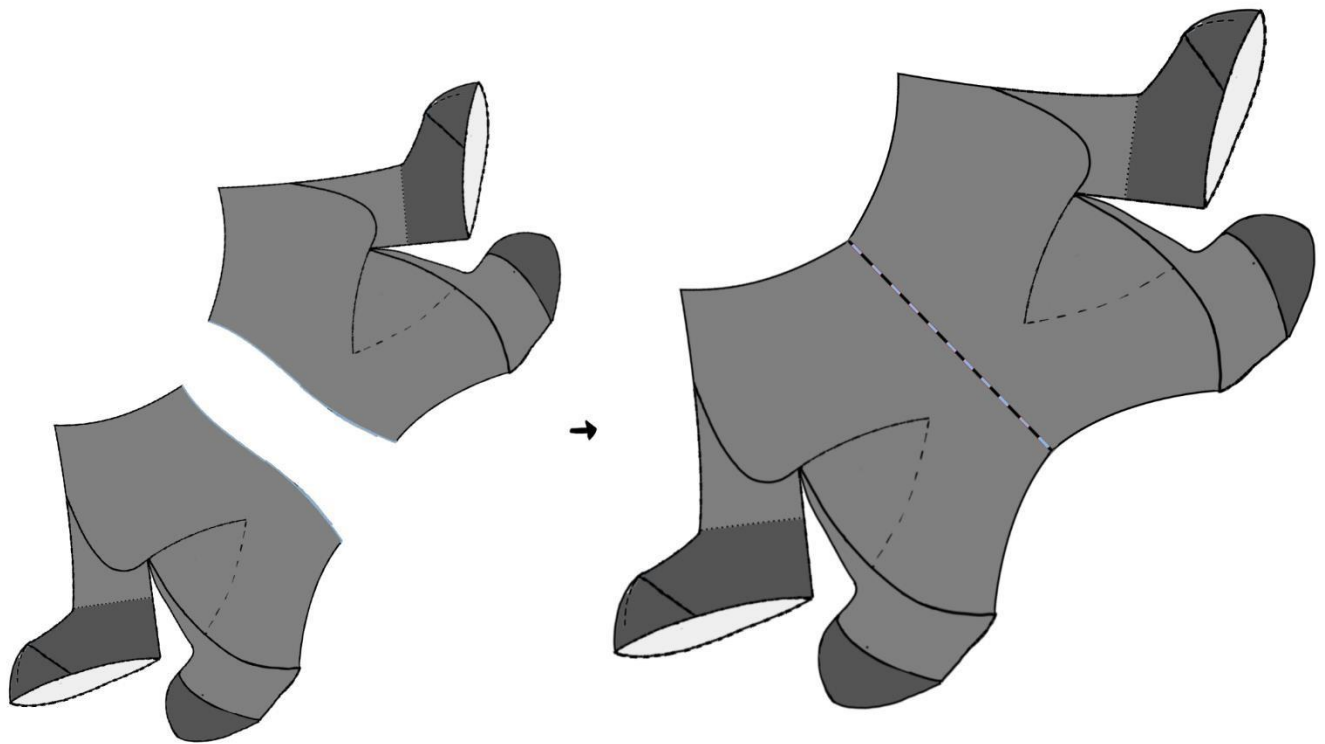
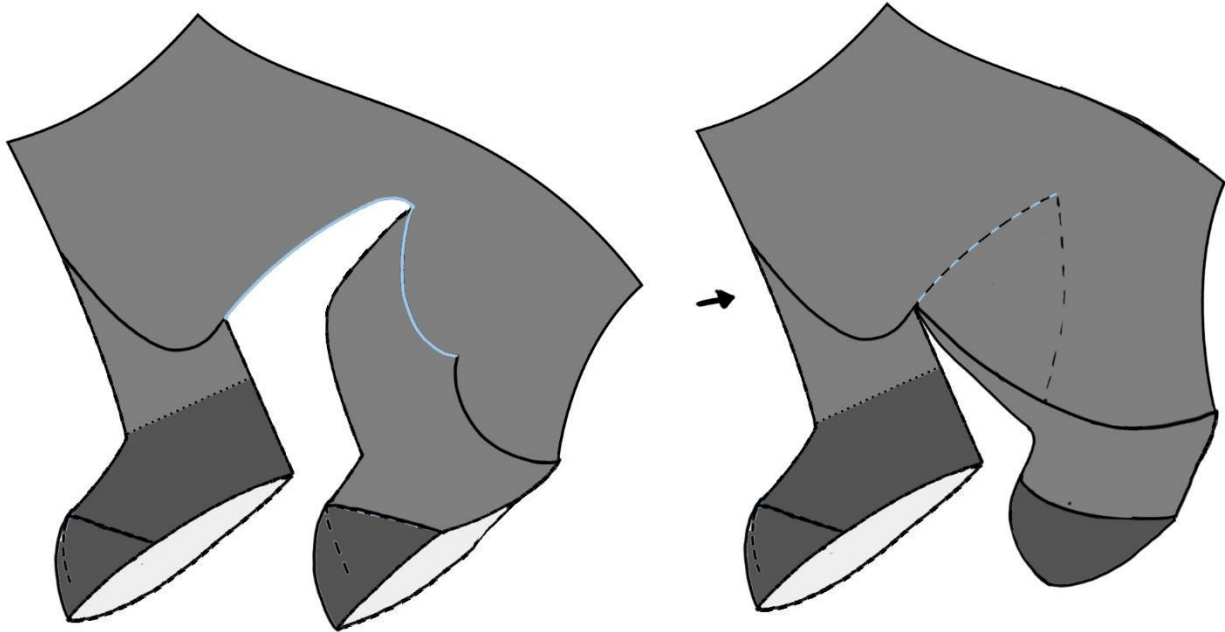
Sew the Top of the Foot to the Body and Leg pieces.



Attach the Paw pieces to the leg pieces using the markers as a guide.

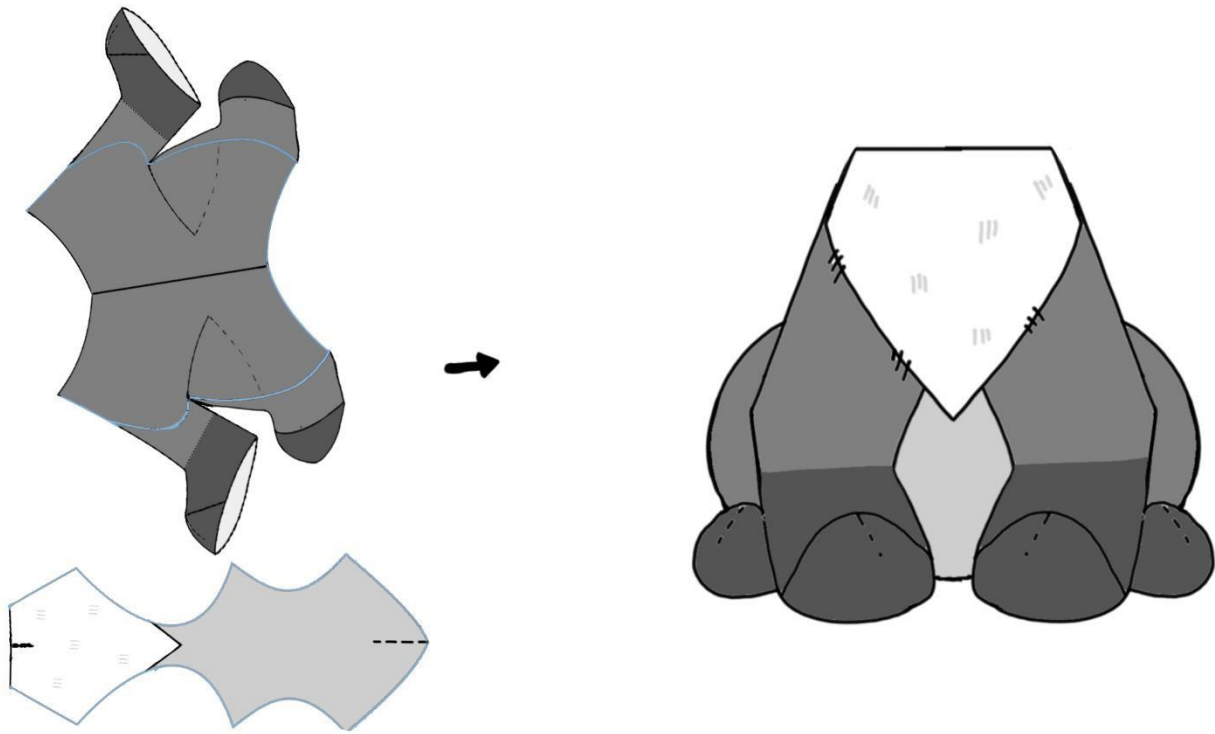


Sew the inner piece of the Back Leg to the Body piece. Once this is done repeat all of the Body steps to make the other side.

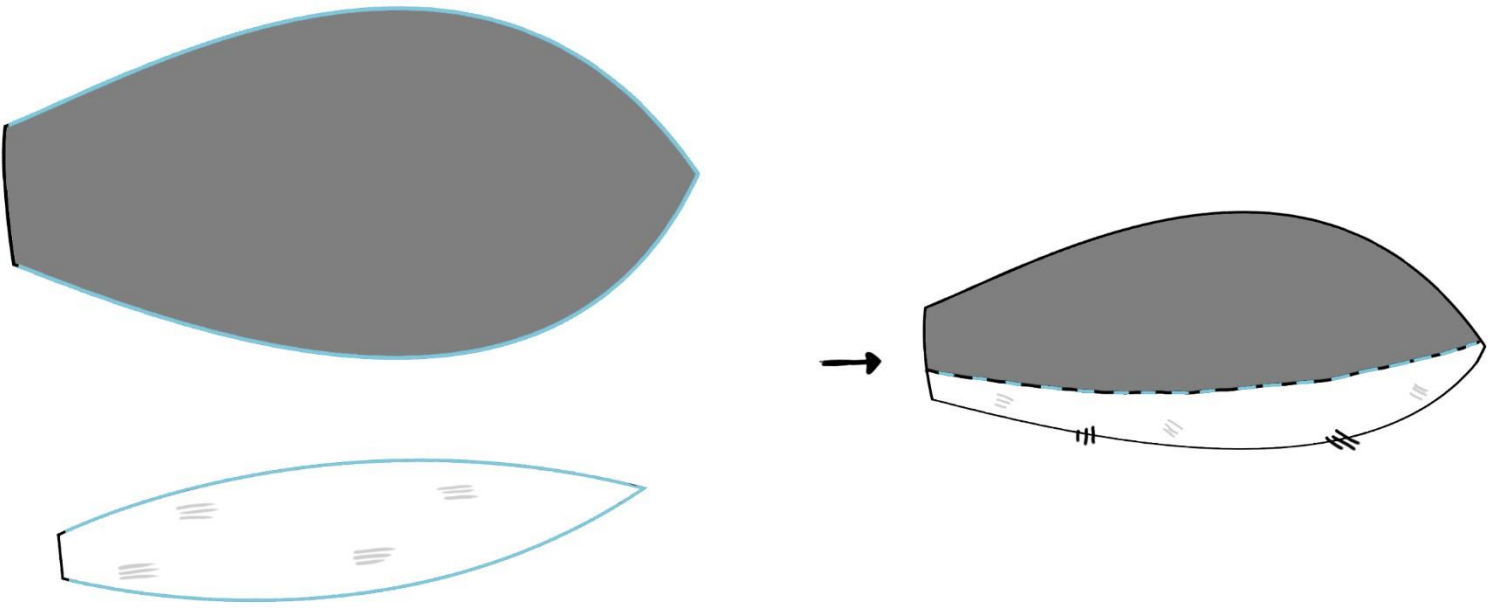


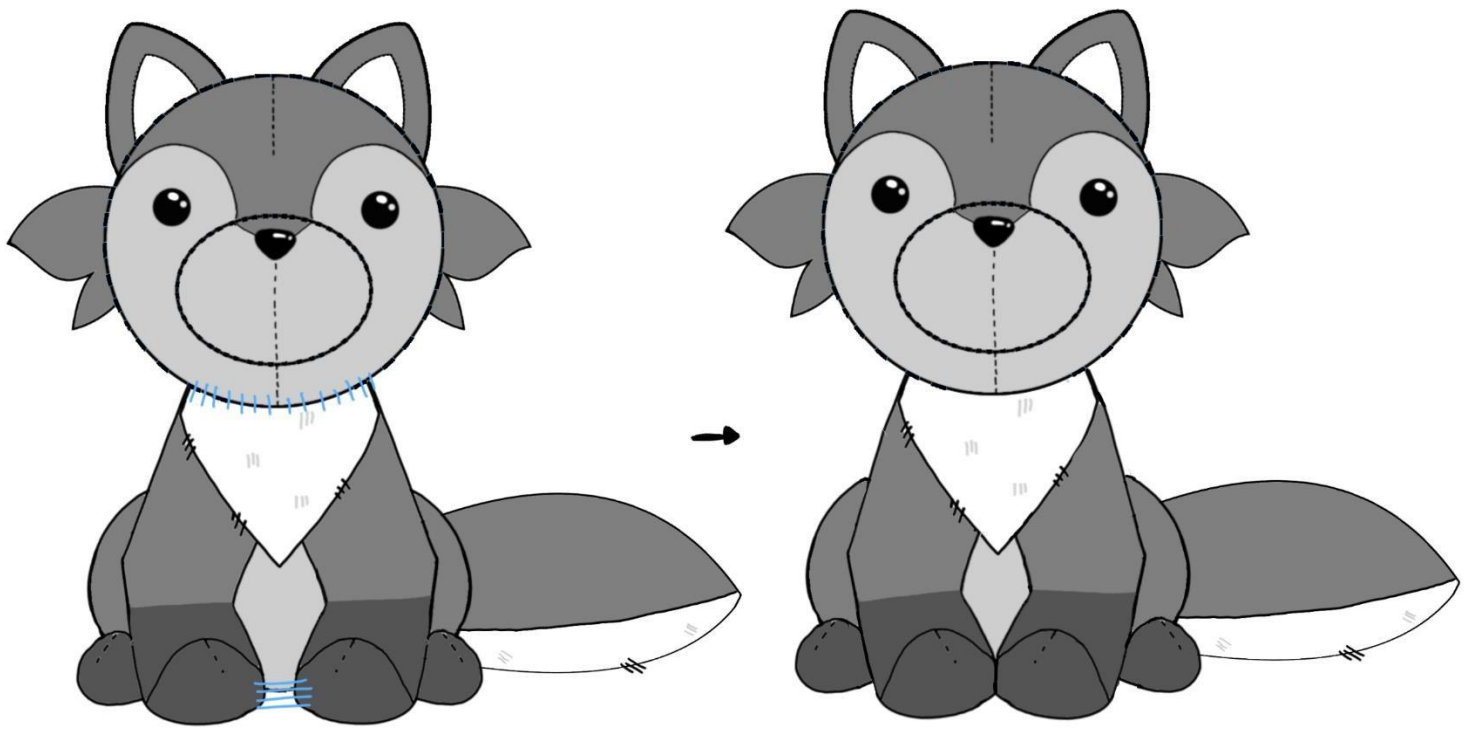
Attach both pieces of the Body by stitching them right sides together.

Sew together the Belly piece and the Body pieces. Once sewn flip the Body inside out and stuff.

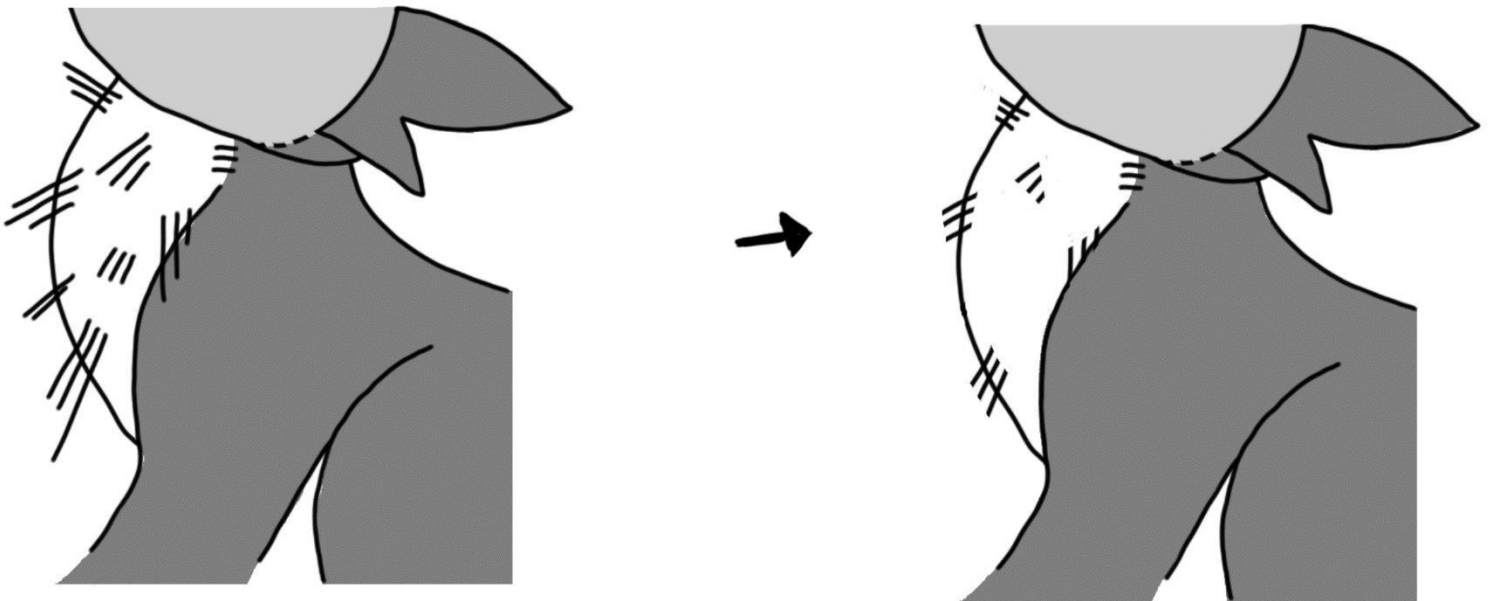


Sew together the two pieces of the tail right sides together. Flip and stuff once done.





Sew the Head, Body, and Tail together using a ladder stitch. If you want, you can sew the two front feet together to help with the sitting pose.



Finally, if faux fur was used for the Belly or Tail, it is suggested to trim it, so it looks neater.

**Finished!**